

Blush

BEAUTY & TANNING

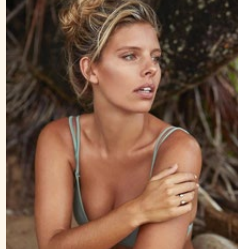
**TREATMENT
PRICELIST**

**367 Richmond Road,
East Twickenham, TW1 2EJ**

020 8892 2820

www.blushrichmondbridge.co.uk

TANNING



SUNBEDS

Alisun 500+

Pay as you go: £1 per minute

Courses: 1 hour £45

2 hours £75

3 hours £95

Courses are valid for 1 year from purchase date.

ST. TROPEZ SPRAY TANNING

ST. TROPEZ

Instant, UV free and sprayed by beauticians, beach tan in less than 30mins. Prior to your appointment exfoliate and moisturize, ideally night before. We use St. Tropez tanning.

1 Spray £25

2 Sprays (valid for 1 month) £45

5 Sprays (valid for 6 month) £100

EYE TREATMENTS

Eye Lash Tinting £16.50

Eye Brow Tinting £9.50

Eye Lash Lift/Perm £35

Eye brow tidy £10

Individual False Eye Lashes £15

(Lasts about 3-5 days)

LASH PERFECT

Lash Perfect
eyelash extensions

Semi-Permanent lash extensions.

Extremely versatile, you can

have long glamorous, natural or thick and full of volume.

LASH PERFECT EXTENSIONS Full Set £80

(1hr and 30mins to 2hrs)

LASH PERFECT EXTENSIONS Half Set from £50

(Middle to outer corner, 45mins -1hr)

LASH PERFECT EXTENSIONS Corners from £27.50

(Outer corners, 30mins)

LASH INFILLS 15mins - 1 hour £20 - £60

3D LASHES 1 hour - 1 hour 30 mins £95

EXPRESS LASHES 45mins £35

(Full set lasts up to 2 weeks)

FACIALS

dermalogica[®]
a skin care system researched and developed by The International Dermal Institute

The Dermalogica professional skincare range goes far beyond just a facial. Our unique face mapping skin analysis allows us to create the most effective treatment for our clients.



PRESCRIPTIVE FACIAL (1hr) £55

A prescriptive facial designed around each client's skin type and condition using Dermalogica's unique face mapping skin analysis techniques.

AGE SMART FACIAL (1hr 15mins) £67.50

Age smart products contain advanced ingredients proven to slow the biochemical reactions that contribute to skin ageing. This facial leaves your skin feeling smoother, firmer and healthier.

MICRO ZONE (20mins) £20

Quick targeted treatments, focused on specific skin need in 1/3 of the time. Flash exfoliation - resurface & brighten, Blackhead relief - clear breakouts, Eye rescue - brighten and firm, Rapid spot clearing - clear breakouts, Lip renewal - smoothing conditioning, Hand repair - exfoliation and hydration, Men's skin fitness - targeted to men's skin issues

CLEAR START FACIAL (teenage) (30mins) £35

For younger adults, a way of introducing you to skin care and improving those pesky teenage skin issues

MINI FACIAL (30mins) £40

This is a shortened version of Dermalogica's prescriptive facial. If you're a client with a busy schedule this is an effective facial in half the time.

NEW FACIALS FROM BLUSH



PRO POWER PEEL

When it comes to chemical peels, we've always had a unique perspective. Promoting overall skin health is one of Dermalogica's core values. In addition to being our fastest and strongest peel yet, the Pro Power Peel provides you with a full suite of products and the flexibility to create bespoke peels that are perfectly suited to each client's needs. A sensitivity test and consultation is essential a minimum of 24 hours prior to your first treatment. You will be given extensive after care advice including a skin kit to take care of your skin after treatments.

(1hour) £79.50



ADVANCED ACTIVE VITAMIN TREATMENT

Packed with nourishing anti-ageing ingredients the AVT will leave your skin looking radiant and dewy. The freshest most active forms of Vitamin A, C and anti-oxidants are driven deep into the lower layers of the skin using soundwaves and small electric pulses. The AVT is suitable for all skin types and is great for reducing sun-damage, pigmentation, premature-ageing, dryness, uneven skin tone and scarring with measurable differences after just one session.

(60mins) £75

(90mins) £90

HYDRABOOST TREATMENT

The perfect antidote to dry, lackluster skin, this intensive treatment deeply hydrates while plumping and firming the skin. Based on hyaluronic acid it helps to reduce fine lines caused by dehydration and increases the plumpness of the dermis resulting in moisturized glowing skin. (1 hour) £90

DIAMOND PEEL DERMABRASION

The treatment allows you to treat lines, wrinkles, dull dehydrated skin, sun damaged skin and acne scarring congested acne prone skin. Using a controlled method of skin resurfacing, by gently exfoliating the outer layers of the skin, the treatment increases new collagen and elastin formation to visibly rejuvenate and firm the skin of the face, neck and body. Results are visible immediately. However, a course of treatment is recommended to achieve the maximum effect.

SKIN SMOOTHIE (30mins) £45

SUPER SKIN SMOOTHIE (60mins) £67.50

BRIGHT EYES (30mins) £40
(includes eye contour lift and serum)

BACK SHINE (30mins) £45
(Back shine is for small pimples and dry skin on the back of the arms. The skin instantly looks smoother and brighter.)

DIAMOND PEEL DERMABRASION
& SKIN REJUVANATION £110

Combined facial achieving the ultimate results in anti ageing and skin smoothing; Dermalogica Age smart and collagen products are also used to maximize treatment results.

DERMA PEN

Advanced verticle skin needling promotes scar-less healing and regeneration of normal woven collagen. Similar to fractional laser treatments but without side effects or downtime. Dermapen is recommended for:

- Aged Sagging Skin • Finelines & Wrinkles
- Smokers Lines around the Lips • Skin Tightening & Rejuvenation
- Large Pores • Stretch Marks • Scars (Ance, Surgical & Burns)
- Alopecia • And many more cosmetic imperfections

1 TREATMENT £135

3 TREATMENTS (Saving of £45) £360

5 TREATMENTS (Saving of £120) £550

BODY TREATMENTS

BODY EXFOLIATION

Full body scrub with natural sea salts and essential oils leaving your skin polished to perfection, also includes a full body cleanse and moisturize.

(45 min) £35

MASSAGE

Using individually blended aromatherapy oils personalised to each client and their needs. Book anything from full body to just neck & shoulders, total relaxation or deep tissue massage.

30 mins £35

45 mins £45

60 mins £57

EAR PIERCING

Piercing complimentary with purchase of earrings

9CT GOLD & WHITE GOLD £30

TITANIUM (for sensitive ears) £25

GOLD PLATED AND STAINLESS STEEL £19.50

NOSE £25

CARTILAGE £25

NAILS



MANICURES

+ £2.50 French

RE-VARNISH: Only polish change colour/French (10mins) £10

EXPRESS: File, shape, buff & paint (20mins) £14.50
(includes French finish)

MINI MANICURE: File, cuticles, buff and paint £18.50

OPI SPA: File, cuticles, scrub, masque, massage & paint (45mins) £27

SPA FOR MEN: Same as OPI Spa (30mins) £20

OPI GEL COLOUR

+ £2.50 French

14 day wear manicure, no damage, no chips

FULL SET (30mins) £26
(Mini manicure & gel colour application)

GEL COLOUR COLOUR CHANGE (1hr) £30
(Removal and mini manicure & replacement gel)

GEL COLOUR REMOVAL (30mins) £20
(Removal, mini manicure & choice of finish)

SNS NAILS



3 week manicure - SNS is a dipping powder has no odour, no liquid, no UV light. A healthy alternative to gel or acrylic

NATURAL SET (45mins) £33

CHANGE (90mins) £42

PEDICURES

+ £2.50 French

RE-VARNISH: colour / French (10-15mins) £10

MINI PEDICURE: file, soak, hard skin removal, shape & paint (30mins) £25

OPI SPA: file, soak, cuticles, foot scrub, masque, hard skin removal, massage & paint (60mins) £35

OPI GEL PEDICURE:

Mini (30mins) £30

Spa (1hr) £40

SPA FOR MEN: OPI Spa no polish (45mins) £30

WAXING

Warm wax and hot wax available. Please allow slightly more time if hot wax is preferred

	STRIP WAX	LYCON HOT WAX
BIKINI	£16	£19
HIGH/ GSTRING BIKINI	£18	£22
BRAZILIAN	£27	£39.50
HOLLYWOOD	£31	£37.50
UNDER ARM	£10	£14
LIP OR CHIN	£8	£11
EYE BROW TIDY	£9	£12
BACK	£21	
CHEST WAX	£21	
NOSTRIL WAX		£7
LOWER LEG	£21	
UPPER LEG	£24	
¾ LEG	£25	
FULL LEG	£30	
½ ARM	£17	
FULL ARM	£22	

Full body wax on quotation



PACKAGE DEALS (Excludes Lycon)

LIP, CHIN & EYEBROWS	£20
½ LEG & BIKINI	£33
½ LEG & BIKINI & UNDERARM	£38
½ LEG & BRAZILIAN	£39
½ LEG, BRAZILIAN & UNDER ARM	£42
FULL LEG & BIKINI	£41.50
FULL LEG & BIKINI & UNDER ARM	£45
FULL LEG & BRAZILIAN	£48
FULL LEG, BRAZILIAN & UNDER ARM	£51
EYELASH LIFT/PERM & TINT	£45
EYELASH TINT, EYEBROW TINT & EYEBROW TIDY	£24.50
EYELASH & BROW TINT	£17.50
FULL FACE	from £15

NATURALASER

Naturalux



PRICING FOR HAIR REDUCTIONS

AREA	1 SESSION	3 SESSIONS	5 SESSIONS
LIP	40	105	195
CHIN	40	105	195
NECK	40	105	195
FULL FACE	100	260	500
FOREARM	100	260	500
UNDERARMS	55	135	275
ABDOMEN	40	105	195
NIPPLES	25	55	100
BIKINI	60	150	280
HIGH BIKINI	70	180	340
BRAZILIAN/ HOLLYWOOD	85	220	400
BACK OF LEGS	90	235	440
¾ LEG	165	450	800
FULL LEG	260	730	1230
BUTTOCKS	90	235	440
FEET	40	105	195

MEN

BACK	150	400	735
CHEST	100	260	500
BACK & CHEST	210	600	1000
ABDOMEN	100	260	500
SHOULDERS	90	235	440

PRICING FOR REJUVENATION

ROSACEA	£50	£135	£250
THREAD VEINS	£50	£135	£250
PIGMENTATION	£50	£135	£250
FULL FACE	£100	£270	£500
HANDS	£100	£270	£500
FULL FACE & HANDS	£150	£405	£650

FOR THE LITTLE LADIES

Under 13s Treatments

FILE PAINT	£7.50
TOE PAINT	£7.50
MINI PEDICURE	£15
MINI MANICURE	£10

GLAMTEEN QUEEN	(Max 6 Persons)
Fingers & Toes	
Foot Soak, Massage, File & Paint	£25 per person
Hands File & Paint, Buff, Massage & Nail Art	



PRINCESS PAMPER PARTIES	(Max 10 Persons)
Fingers & Toes	
Pamper Bag	from £15 per person
Nail Art & Glitter	
Face Glitter	
Fun Body Tattoos	
Balloons, Cupcakes & Drinks	

Please feel free to bring along Birthday Cakes, etc and let us know if you require any extras for the perfect party.



GIFT VOUCHERS AVAILABLE:

Valid for 6 months from issue date.



We stock Advanced Nutrition Programme, effective skincare, nutritional supplements.

ADVANCED nutrition programme

We also stock Skinade and Jane Iredale products.

PAYMENT

We accept cash, cheque (with card details) and credit cards, including Amex.

PLEASE NOTE:

If you arrive late, we may need to reduce the duration of your treatment.

CANCELLATION POLICY:

24 hours cancellation notice is required, otherwise full payment of treatments booked will be charged.

MEDICAL ADVICE:

Please, let the beautician know, if you are pregnant, or, suffering from any type of allergy.

WE ARE OPEN:

Monday	9.30am – 6.00pm
Tuesday	9.00am – 7.00pm
Wednesday	9.00am – 9.00pm
Thursday	9.00am – 9.00pm
Friday	9.00am – 6.30pm
Saturday	9.00am – 6.00pm
Sunday	10.30am – 3.30pm

BOOK ONLINE

www.blushrichmondbridge.co.uk

CALL 020 8892 2820



Blush Richmond Bridge



@blushrichmond

**367 Richmond Road,
East Twickenham, TW1 2EJ**